

State of Wyoming Corner Record

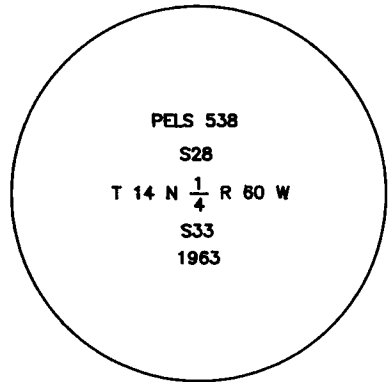
(In compliance with the CORNER PERPETUATION AND FILING ACT, Wyoming Statutes, 1977, Section 36-11-101, et. seq., and the Rules and Regulations of the Board of Registration for Professional Engineers and Professional Land Surveyors.)

Reverse side of this form may be used if more space is needed.

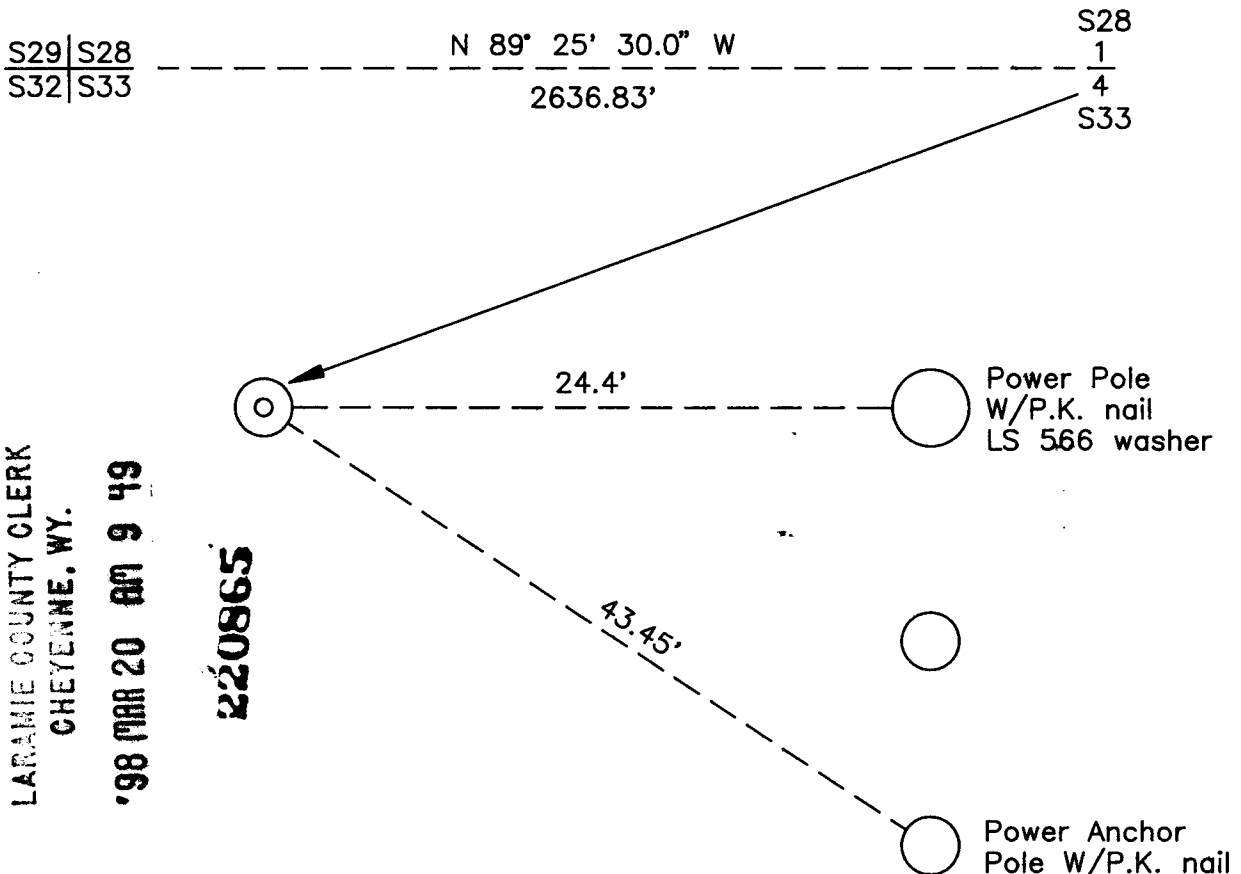
Record of original survey and citation of source of historical information (if corner is lost or obliterated). Description of corner monumentation evidence found and/or monument and accessories established to perpetuate the location of this corner. Sketch of relative location of monument, accessories, and reference points with course and distance to adjacent corner(s) (if determined in this survey). Method and rationale for reestablishment of lost or obliterated corner.

No corner evidence found for original corner to section(s) 21,33 called out in original G.L.O notes as a set lime stone 18x10x4.

Found 6" dia conc monument w/2" Brass cap marked as noted on right.

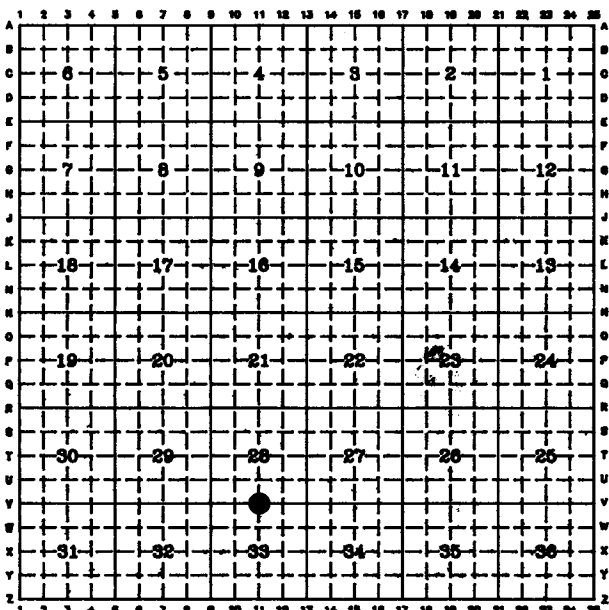


Monument Inscription



Date of Field Work: 09/10/97 Office Reference: Field book No. 43

CROSS INDEX DIAGRAM



Firm/Agency, Address

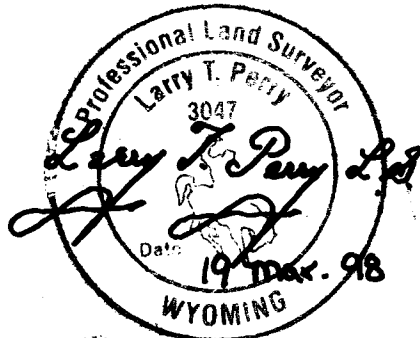
issued on:

Armstrong Engineering Services
916 E. Corison
Cheyenne, Wyoming 82006
(307) 632-2659

This corner record was prepared by me or under my direction and supervision.

SEAL & SIGNATURE

for Wm. Armstrong



BOOK 1475

1612